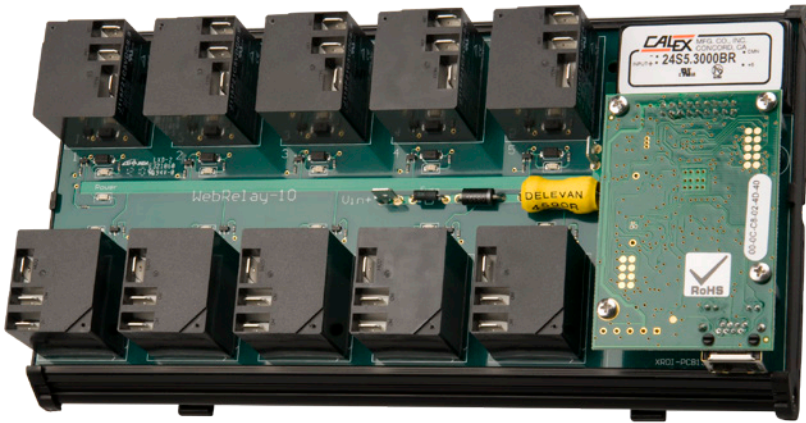


### PRODUCT OVERVIEW



WebRelay-10™ is a robust, industrial relay board with Ethernet communications. It provides remote relay control through its ten large 30-Amp relays.

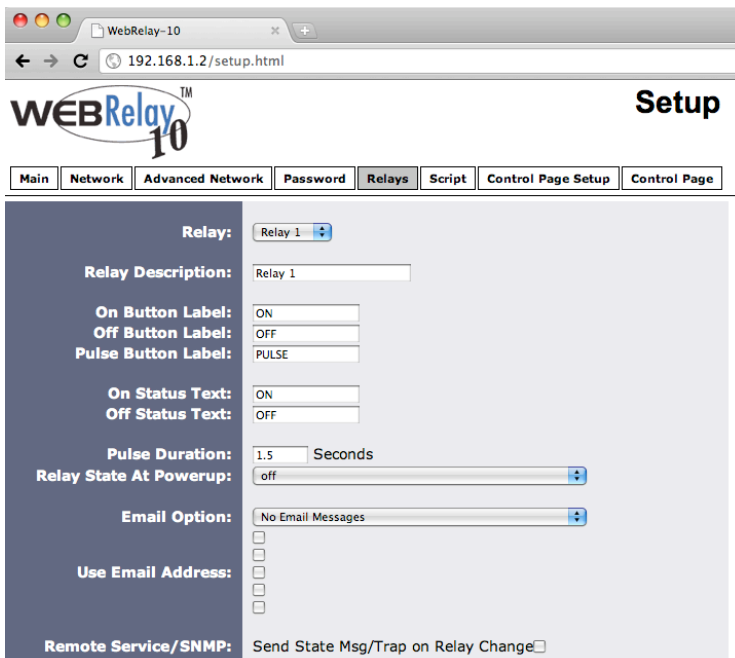
The relays can be individually controlled using a standard web browser or by sending commands from a custom control application.

It is self-contained with a built-in web server, and requires no external software, additional network modules, or computers.

WebRelay-10™ is designed for industrial applications and can be DIN-Rail mounted inside a control cabinet. Tab connectors (1/4 inch) are used for power and relay contact connection.

### Features:

- Ten independent 30-Amp Relays (Form C, SPDT).
- Built-in web server for browser-based setup and control.
- No special software or device drivers required.
- XML status and control page make communications with custom computer applications simple.
- Can operate as a Modbus TCP/IP slave.
- On/Off and Pulse modes.
- Wide power supply range (10-36 VDC).
- DIN-Rail mountable.
- LEDs indicate the current relay state.
- 1/4" tab-connectors.
- UL/CUL listed relays (E197852).



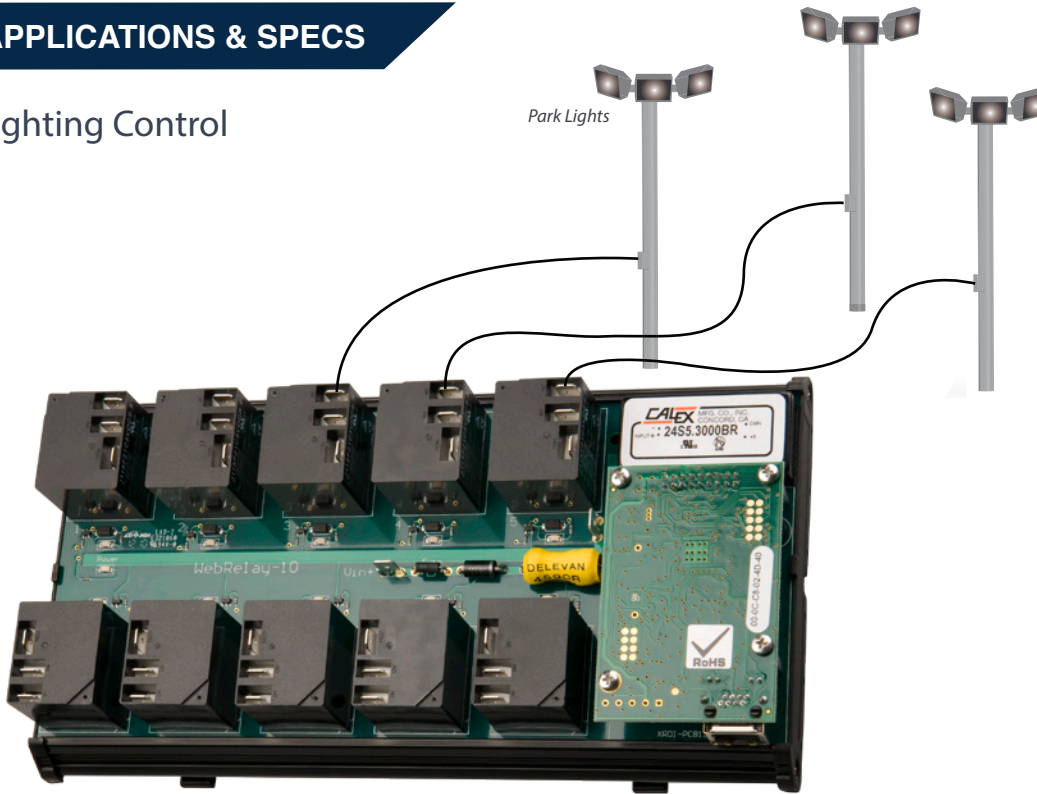
Relay Setup Page

WebRelay-10		
Relay 1	ON	ON OFF PULSE
Relay 2	ON	ON OFF PULSE
Relay 3	OFF	ON OFF PULSE
Relay 4	ON	ON OFF PULSE
Relay 5	OFF	ON OFF PULSE
Relay 6	ON	ON OFF PULSE
Relay 7	OFF	ON OFF PULSE
Relay 8	ON	ON OFF PULSE
Relay 9	ON	ON OFF PULSE
Relay 10	OFF	ON OFF PULSE

WebRelay-10 Control Page

### APPLICATIONS & SPECS

#### Lighting Control



#### Additional Applications

- ✓ Automation Controller
- ✓ Industrial Automation
- ✓ Car Wash Industry
- ✓ More...

#### Models:

- X-WR-10R12-I

#### Power Requirements

- Voltage: 10-36VDC
- Max Current: 53mA - 1.2A
- Note: Current based upon voltage applied and device settings. See users manual for complete breakdown.

#### Relay Contacts

- Number of Relays: 10
  - N.O.
    - 40A @ 240VAC resistive
    - 30A @ 277VAC General Purpose
    - 2hp @ 250VAC
  - N.C.
    - 30A @ 240VAC, 30VDC resistive
    - 20A @ 277VAC General Purpose
    - 1-1/2 hp @ 250VAC
- Contact Type: SPDT (Form 1C)
- Load Type: General Purpose
- Contact Resistance: < 30 milliohms initial
- Contact Material: AgSnO2
- Electrical Life: 100K cycles (Typical)
- Mechanical Life: 10M cycles (Typical)
- Environmental Rating: Over voltage Category II, Pollution Degree 2
- Relay Modes: ON/OFF or Pulse
- Pulse Timer Duration: 0.1 to 86,400 Seconds (1-day)
- Relay Connections: 1/4" Tab Terminals

#### Real-Time Clock

- Manual or NTP(Network Time Protocol) setup
- NTP Sync Period: Once, Daily, Weekly, On Power-up
- Auto Daylight Savings Adjustment
- Battery (capacitor) Power Backup

#### Capacitor Power Backup

- Backup Functions: Retain Real-Time Clock, External Variables, Relay State
- Backup Duration: 3 days minimum

#### Network

- Type: 10/100 Base-T Ethernet Port
- Setup: Static IP address assignment, HTTP port selectable

#### LED Indicators

- Number of LEDs: 13
  - Power on
  - Relay coil energized 1-10
  - Network linked
  - Network activity

#### Physical

- Size:
  - 9.125in (232mm) wide
  - 4.25in (126mm) tall
  - 2.425in (62mm) deep
- Weight: 22 oz (626 grams)
- Enclosure Material: PVC
- Enclosure Flame Rating: UL94 V1
- Operating Temperature: -40°F to 150°F (-40°C to 65.5°C)

#### Protocols

- HTTP, XML, Modbus, SNMP, SMTP, Remote Services, and Remote Monitoring

#### Logging

- Log File Size: 512K max 17900 logs
- Storage: Nonvolatile Flash
- Buffer Architecture: Circular Buffer
- Log data can be periodically read and stored on a computer

#### Password Settings

- Password protection on setup page: Yes
- Password protection on control page: Optional
- Password Encoding: Base 64
- Max Password Length: 10 Characters

#### Regulatory Compliance

- Electromagnetic Compliance:
  - IEC CISPR 22, CISPR 24, FCC 47CFR15, EU EN55024, EN55022
- Product Safety:
  - IEC 60950-1 / EN 60950-1